



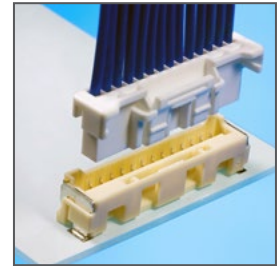
With operating temperature ranges of -40 to +105°C, Molex microminiature connectors enable automotive manufacturers to create solutions which allow people to do things in their vehicles that they previously could only do at home

Demands are increasing for smarter vehicles with some self-driving/ detecting and communication capabilities. From navigation systems and gear shifters to locks and lighting, our microminiature solutions are proven for the use in long life, harsh environments.

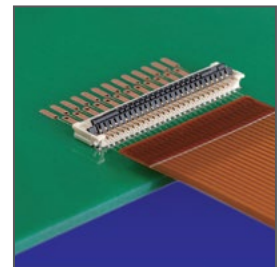
- The majority of the wire-to-board/wire-to-wire connection systems come with a positive latch to ensure mating conditions.
- Tuning fork-style interface is applied to some product families such as CLIK-Mate to completely prevent pin stub/crash.
- Many of the FFC/FPC connectors have flex circuitry placement guide and retention support.

Microminiature Connectors for the Automotive Industry

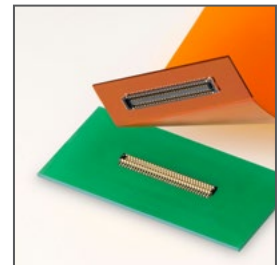
Operating Temperature of -40 to +105°C



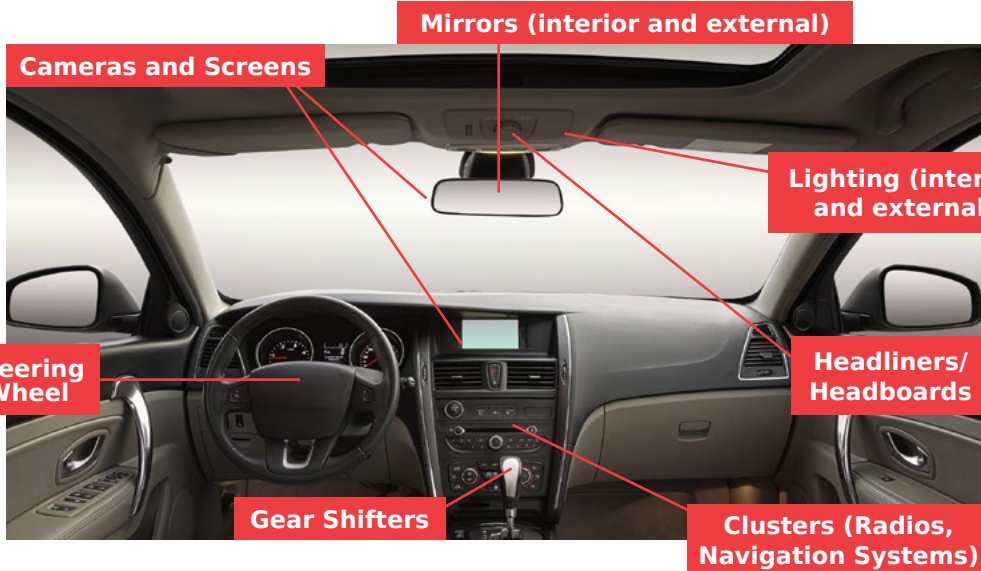
CLIK-Mate™ Wire-to-Board Connectors



FFC/FPC Connectors



SlimStack™ Board-to-Board Connectors



Applications

Comfort and Infotainment

- Radios
- Navigation systems
- Headboard units
- Multimedia systems
- HomeLink*

Interior driver interface and powertrain

- Gear shifters
- Steering wheel
- EV battery controllers

Safety and Driver Assist

- Chassis
- Doors
- Locks
- Mirrors
- Crash avoidance sensors
- Cameras
- Radars

Body Electronics

- Lighting
 - Fog lights
 - Interior lighting
 - Rear lighting

*HomeLink is a registered trademark of Gentex Corporation.

Wire-to-Board Connectors

Product Family	Pitch	Features	Series No.
Pico-Clasp™	1.00mm	Positive latch Single and dual row SMT	501334, 501330, 501331, 501568, 501939, 501940, 501953, 501193, 501189, 501190, 501571
Pico-Lock™	1.00mm	Low Profile Positive Latch	503765, 503764, 503763
CLIK-Mate™	1.25mm	Positive latch Anti-stub interface SMT	502381, 502380, 502382, 502386
	1.50mm	Positive latch Single and dual row Anti-stub interface SMT through hole (single)	502579, 502578, 502584, 503159, 502585, 503175, 503149, 503154, 503148, 503429, 503395
Pico-Lock™	1.50mm	Positive latch Right angle, low profile Gold Plated	504050, 504051, 504052
CLIK-Mate	2.00mm	Positive latch Anti-stub interface SMT	502438, 502439, 502443, 502494
iGrid™	2.00mm	Positive latch Dual row Through hole	501647, 501648, 501646, 501645, 501876
MicroTPA™	2.00mm	Positive latch Comes with TPA Wire-to-wire available Potable PCB headers (high wall type)	56086, 59370, 51227, 51216, 51217, 55755, 55487

Board-to-Board Connectors

Product Family	Pitch	Circuits	Stack Height	Features	Series No.
SlimStack™	0.50mm	16-80	1.50-4.00mm	Generous lead-in	54722, 55560, 54363, 55650, 54102, 53885, 500334, 52991, 53748, 53916, 501920
	0.635mm	20-240	6.00-16.00mm	Wide range of options in stack height and pin count	52885, 55091, 53625, 53647, 53649, 53627, 52901
	0.80mm	10-40	4.50-8.00mm	Right angle and floating options	52465, 52588, 53307, 53309, 53364, 53353

FFC/FPC Connectors

Product Family	Pitch	Circuits	Actuator and Configuration	FPC Placement / Retention	Series No.
FFC/FPC	0.30mm	15-51	Front Flip	Straight FPC	501912
		17-51	Back Flip	Indented FPC (option to add ears for guide)	502250
		15-51	Back Flip	Straight FPC	502598
		9-51	Front Flip	FPC with Ears	503566
		7-51	Back Flip	Straight FPC	504754
		19-61	Back Flip	Straight FPC	504740
	0.50mm	30, 50 and 80	Positive latch, vertical	Flex preassembled with positive latch	501786
			Positive latch, right angle		501864
		4, 5, 6 and 8	Back-Flip™, right angle	Indented FPC	501461
		4-80	Front-Flip, right angle	FPC with ears	505110